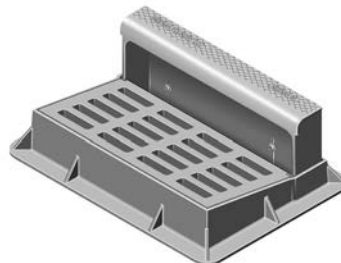
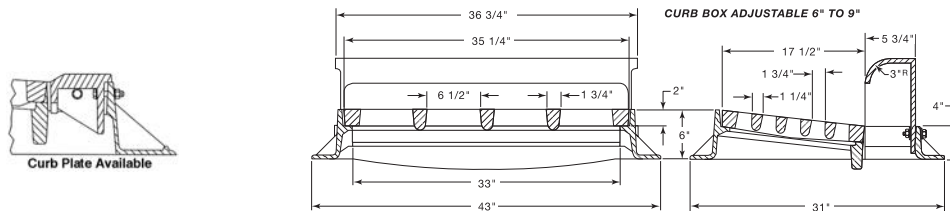


■ Note: When specifying/ordering grates, refer to "Choosing the Proper Inlet Grate" on pages 125-126.
For a complete listing of FREE OPEN AREAS and WEIR PERIMETERS of all NEENAH grates, refer to pages 327-332.

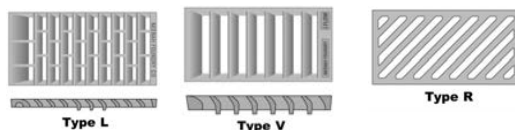
R-3246 Combination Inlet Frame, Grate, Curb Box

Heavy Duty



CATALOG NUMBER	GRATE TYPE	SQ. FT. OPEN	WEIR PERIMETER LINEAL FEET
R-3246	C	1.6	5.8
R-3246	L	2.1	5.8
R-3246	V	2.4	5.8

Standard Grate (shown): Type C
Alternate Grate(s):



Available with Type R Grate.

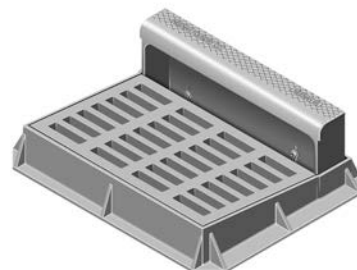
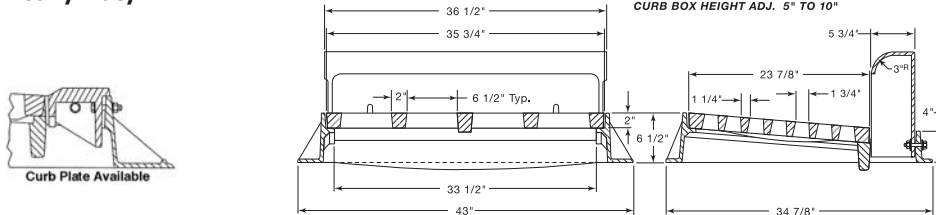
Also available with square, 1" radius or 2" radius.

Order **R-3246-1** for curb plate.

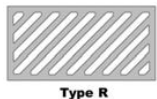
Available option: 6" radius box.

R-3246-A Combination Inlet Frame, Grate, Curb Box

Heavy Duty



Standard Grate (shown): Type C
Alternate Grate(s):



Also available with square or 2" radius.

Order **R-3246-AP** for curb plate.

For double or triple units refer to **R-3293-2** and **R-3293-3**.

CATALOG NUMBER	GRATE TYPE	SQ. FT. OPEN	WEIR PERIMETER LINEAL FEET
R-3246-A	C	2.2	7.0
R-3246-A	R	2.7	7.0

Supplied By:

**TRENCHDRAIN
SUPPLY**

877-903-7246

www.trenchdrainsupply.com